

Ancient Egyptian Art



Palette of King Narmer
from Hierakonpolis, Egypt
ca. 3,000-2,920 B.C.E.
siltstone
approximately 25 in. high



Palette of King Narmer
from Hierakonpolis, Egypt
ca. 3,000-2,920 B.C.E.
siltstone
approximately 25 in. high

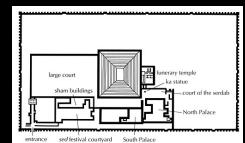


Imhotep
Pyramid and Mortuary of Djoser
Saqqara, Egypt
ca. 2,630-2,611 B.C.E.
limestone

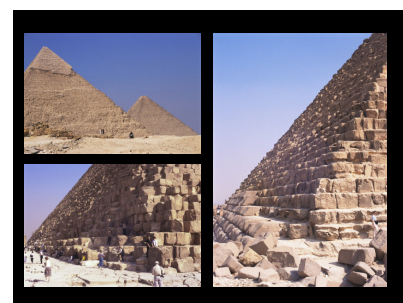
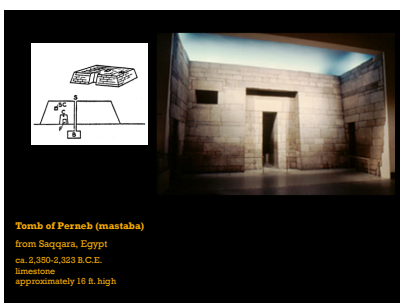
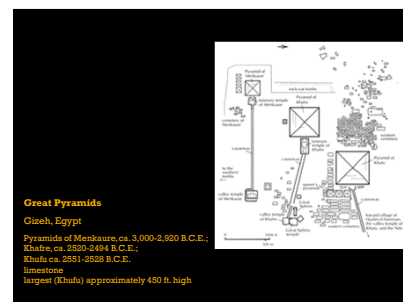
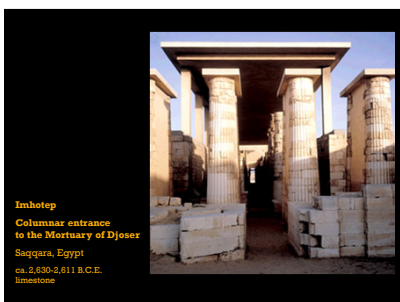
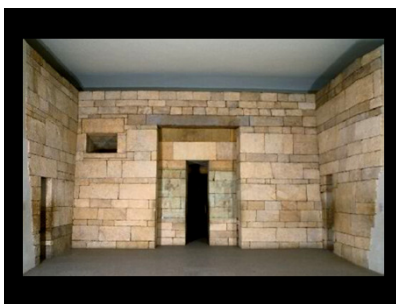
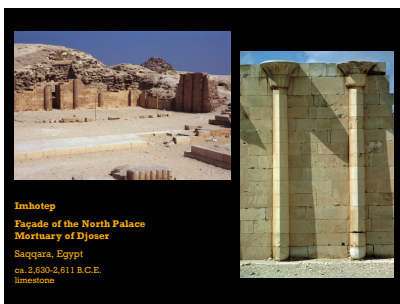
Predynastic Art



Palette of King Narmer
from Hierakonpolis, Egypt
ca. 3,000-2,920 B.C.E.
siltstone
approximately 25 in. high

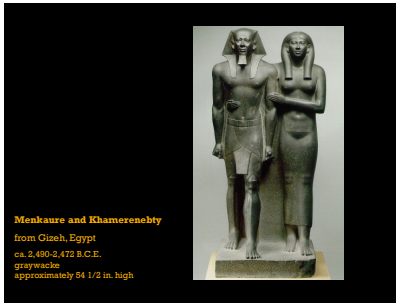


Imhotep
Pyramid and Mortuary of Djoser
Saqqara, Egypt
ca. 2,630-2,611 B.C.E.
limestone





Great Sphinx
Gizeh, Egypt
ca. 2520-2494 B.C.E.
sandstone
approximately 65 ft. high



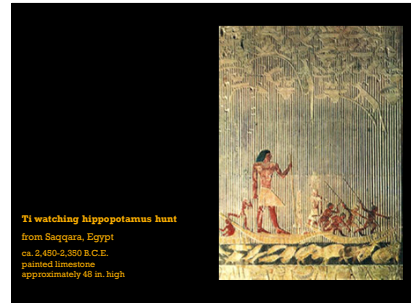
Menkaure and Khamerenebty
from Gizeh, Egypt
ca. 2,490-2,472 B.C.E.
graywacke
approximately 54 1/2 in. high



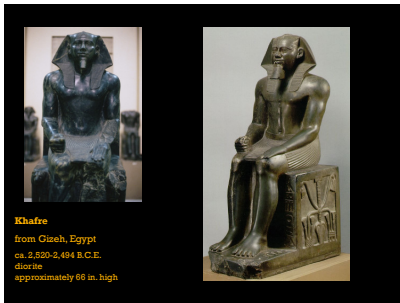
Ka-Aper
from his mastaba at Saqqara, Egypt
ca. 2,450-2,390 B.C.E.
wood
approximately 43 in. high



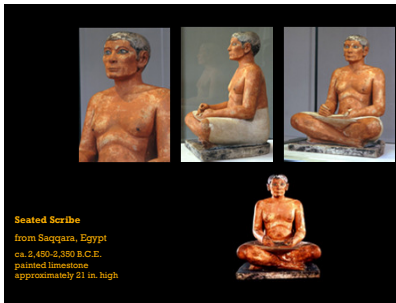
Menkaure and Khamerenebty
from Gizeh, Egypt
ca. 2,490-2,472 B.C.E.
graywacke
approximately 54 1/2 in. high



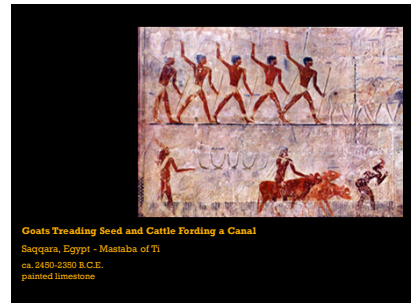
Ti watching hippopotamus hunt
from Saqqara, Egypt
ca. 2,450-2,390 B.C.E.
painted limestone
approximately 48 in. high



Khafre
from Gizeh, Egypt
ca. 2,520-2,494 B.C.E.
diorite
approximately 66 in. high

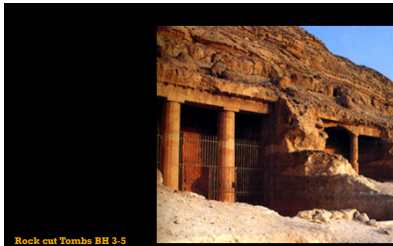


Seated Scribe
from Saqqara, Egypt
ca. 2,450-2,390 B.C.E.
painted limestone
approximately 21 in. high



Goats Treading Seed and Cattle Fording a Canal
Saqqara, Egypt - Mastaba of Ti
ca. 2450-2390 B.C.E.
painted limestone

Middle Kingdom Art



Rock cut Tombs BH 3-5
Beni Hasan, Egypt, Dynasty XII
ca. 1950-1900 B.C.E.



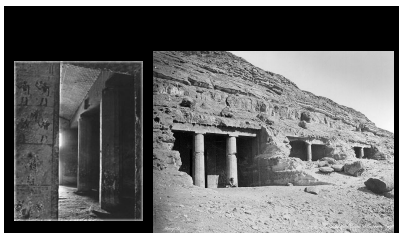
Riverboat
from tomb of Meketre, Thebes, Egypt
ca. 1,985 B.C.E.
gessoed and painted wood
50 3/8 in. long



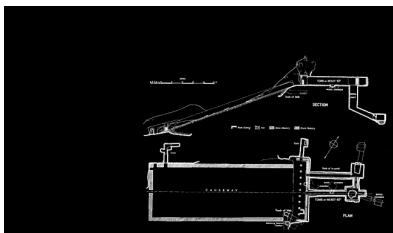
Tomb of Meketre, Thebes, Egypt
ca. 1,985 B.C.E.



Granary
from tomb of Meketre, Thebes, Egypt
ca. 1,985 B.C.E.
gessoed and painted wood
50 1/8 in. long



Rock-cut tombs
Beni Hasan, Egypt
ca. 1,950-1,900 B.C.E.



Tomb of Meketre, Thebes, Egypt
ca. 1,985 B.C.E.



Statuette of an offering bearer
from tomb of Meketre, Thebes, Egypt
ca. 1,985 B.C.E.
gessoed and painted wood
44 1/8 in. high



Hippopotamus
from Thebes, Egypt
1901-1783 B.C.E.
faience and ceramic
7 7/8 in. long



Senmut
Mortuary Temple of Hatshepsut
Deir el-Bahri, Egypt
ca. 1,473-1,458 B.C.E.



Hatshepsut
with offering jars
Deir el-Bahri, Egypt
ca. 1,473-1,458 B.C.E.
red granite
6 ft. 6 in. high

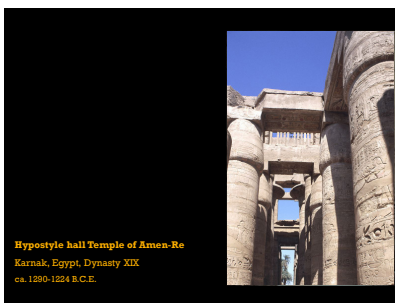
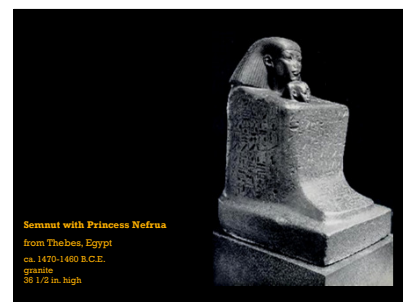
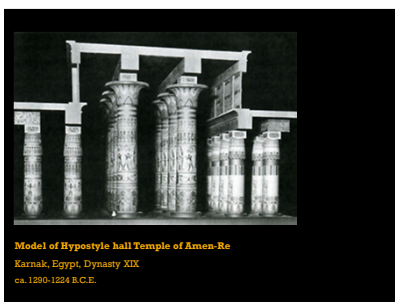
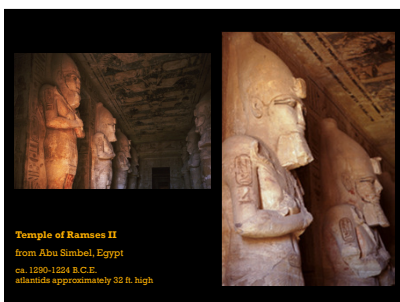
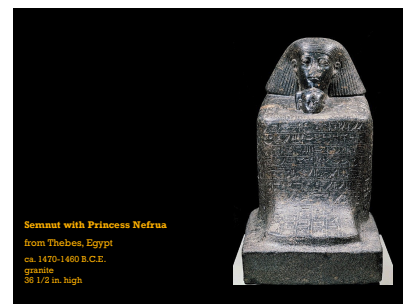
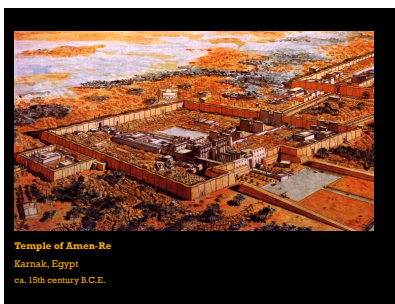
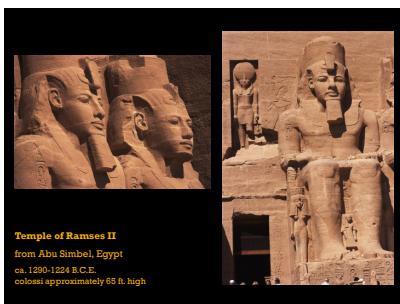
New Kingdom Art

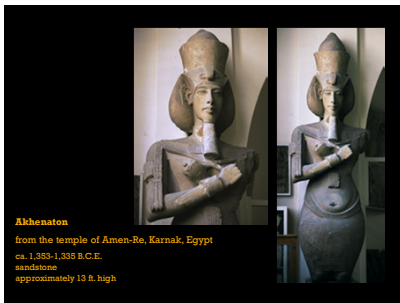


Statue of Hatshepsut
Deir el-Bahri, Egypt
ca. 1,473-1,458 B.C.E.
limestone
76 3/4 in. high

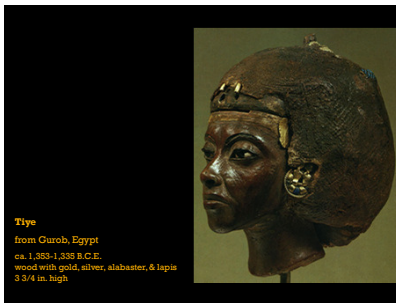


Temple of Ramses II
from Abu Simbel, Egypt
ca. 1280-1224 B.C.E.
colossi approximately 65 ft. high

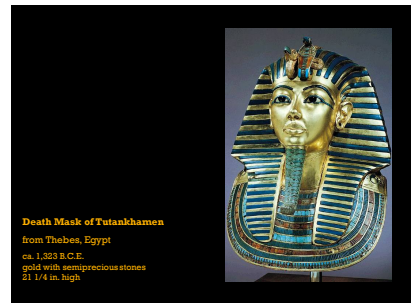




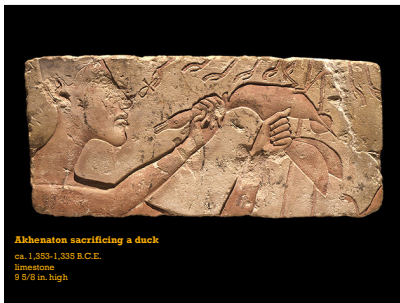
Akhenaton
 from the temple of Amen-Re, Karnak, Egypt
 ca. 1,385-1,335 B.C.E.
 sandstone
 approximately 13 ft. high



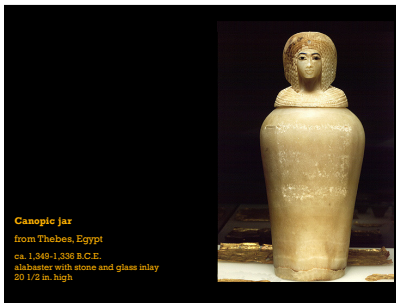
Tiye
 from Gurob, Egypt
 ca. 1,383-1,335 B.C.E.
 wood with gold, silver, alabaster, & lapis
 3 3/4 in. high



Death Mask of Tutankhamen
 from Thebes, Egypt
 ca. 1,323 B.C.E.
 gold with semiprecious stones
 21 1/4 in. high



Akhenaton sacrificing a duck
 ca. 1,383-1,335 B.C.E.
 limestone
 9 5/8 in. high



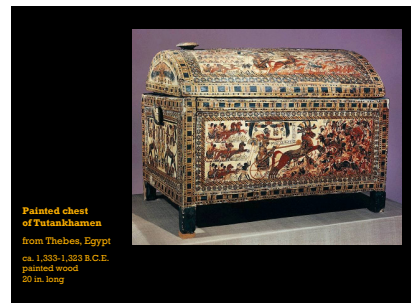
Canopic jar
 from Thebes, Egypt
 ca. 1,349-1,336 B.C.E.
 alabaster with stone and glass inlay
 20 1/2 in. high



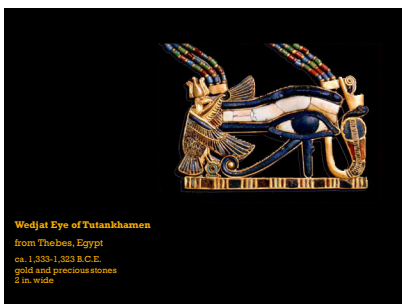
Innermost coffin of Tutankhamen
 from Thebes, Egypt
 ca. 1,323 B.C.E.
 gold with semiprecious stones
 73 in. high



Thutmose
Nefertiti
 from Tell el-Amarna, Egypt
 ca. 1,385-1,335 B.C.E.
 painted limestone
 20 in. high



Painted chest of Tutankhamen
 from Thebes, Egypt
 ca. 1,333-1,323 B.C.E.
 painted wood
 50 in. long

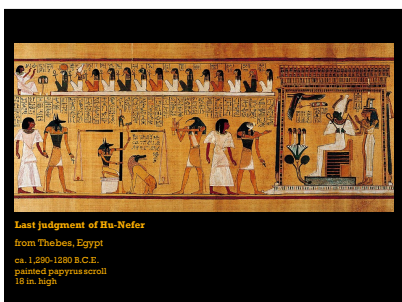


Wedjet Eye of Tutankhamen
 from Thebes, Egypt
 ca. 1,335-1,323 B.C.E.
 gold and precious stones
 2 in. wide

Ptolemaic Art



Cat
 from Thebes, Egypt
 304-31 B.C.E.
 bronze
 11 in. high



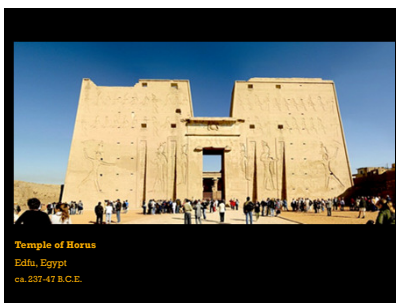
Last Judgment of Hu-Nefer
 from Thebes, Egypt
 ca. 1,250-1,200 B.C.E.
 painted papyrus scroll
 18 in. high



Roman-Egyptian Art

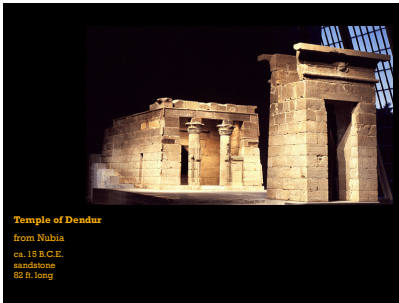


Book of the Dead
 from Thebes, Egypt
 ca. 1,040-945 B.C.E.
 painted and inscribed papyrus
 13 3/4 in. high

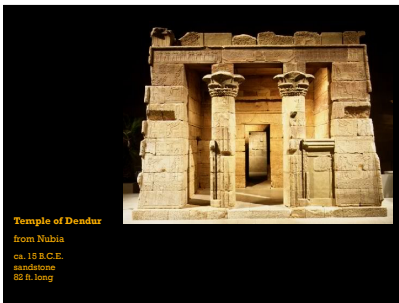


Temple of Horus
 Edfu, Egypt
 ca. 237-47 B.C.E.

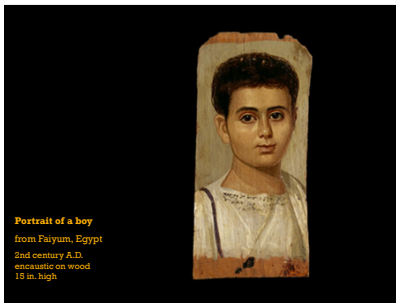




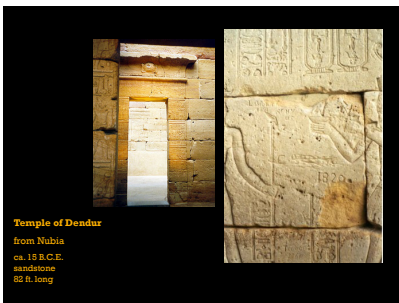
Temple of Dendur
from Nubia
ca. 15 B.C.E.
sandstone
82 ft. long



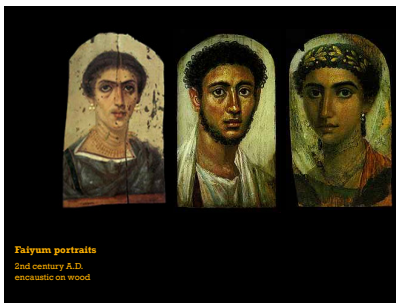
Temple of Dendur
from Nubia
ca. 15 B.C.E.
sandstone
82 ft. long



Portrait of a boy
from Faiyum, Egypt
2nd century A.D.
encaustic on wood
18 in. high



Temple of Dendur
from Nubia
ca. 15 B.C.E.
sandstone
82 ft. long



Faiyum portraits
2nd century A.D.
encaustic on wood